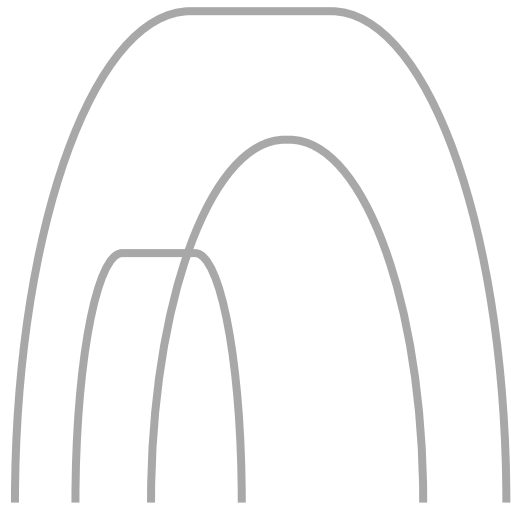


User Guide



Fritillaria Icones

Fritillaria Icones

THE PROJECT

The aim of the *Fritillaria Icones* project is to provide detailed standardized images of living material to aid identification by a broad user group, including non-traditional users of botanical information.

Each image set show currently accepted diagnostic characters plus other morphological and physiological elements that are otherwise poorly represented within the existing literature. . These images endeavour to increase understanding of the genus. An essential principle of the project is to keep it simple and accessible, therefore practical whilst maintaining high image quality. Users are encouraged to make comments and criticism.

Species names reflect a consensus view of the genus by authorities from different geographic regions together with the most recent genetic investigations. Taxonomic and other information are continuously reviewed. Names used in the most recent treatments are not automatically adopted. Each image set is numbered so that any taxonomic revision can be clearly reconciled to changes in nomenclature on future visits to the website. Citations should reference either the accession number and collection or the URL which includes the accession number within the specific character string. Ambiguous labels such as 'Trusted' or 'Reviewed' are avoided as each image set is evidenced in the data box

The core of the *Fritillaria Icones* project is a living collection of more than 600 *Fritillaria* accessions. In developing the collection new acquisitions are considered on the following basis:

TAXONOMY

To have at least one example of each accepted taxa. Where an individual species shows variability the aim is to include multiple examples to represent this variation.

PHYTOGEOGRAPHY

To include material from or near the type locality. Where a species has a wide distribution the collection needs to reflect the species across its geographic range, even if no variation has been reported.

HISTORICAL

To include material associated with a particular collector or to generate e-vouchers for important published work.

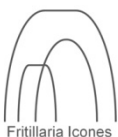
RESEARCH

To assist specific ongoing research.



Donations are always welcome where the material offered was acquired in compliance with relevant national and international laws and conventions. Some accessions are subject to various restrictions by donor institutions.

Part of the conservation role of the *Fritillaria Icones* project is ex situ propagation and distribution of rare and unusual material for various purposes to reduce pressure on wild populations.



Fritillaria Icones

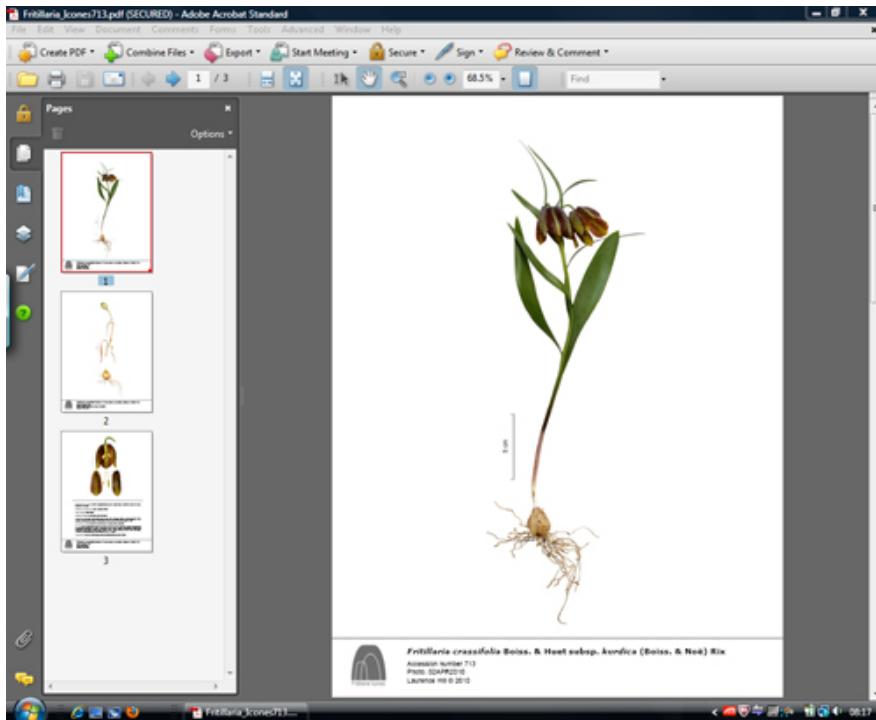
User Guide: URL <http://www.fritillariaicones.com/info/Guide.pdf>
Laurence Hill © 2011

Fritillaria Icones is an Open Access on-line reference to assist with the identification, research and conservation of *Fritillaria* and is made available for non-profit use only. All images remain the copyright of the author and he should be acknowledged at all times.

Originally conceived as a *Fritillaria* portrait project but now extended to include other detailed images and associated data. These images are available to anyone anywhere regardless of means and without the need to travel to various libraries and herbaria.

A series of photographs and notes are provided in Portable Document Format (PDF) for each *Fritillaria*. This provides many different options including print, zoom or save for viewing off-line. All the photographs show the date they were taken, an accession number and scale bar. For comparative analysis the main portraits are always photographed just after dehiscence of the anthers therefore establishing a common point in the annual cycle. Many of the images show details not previously recorded e.g. bulb renewal, stolon & bulblet growth and root development.

Each original image has a file size of about 150-200 MB. When these are compressed and incorporated in to a PDF each file is less than 1 MB. This makes opening the on-line files quick and easy whilst allowing viewing up to 400% with minimal loss of quality. Also printed or saved files will retain all their formatting.



Screen View

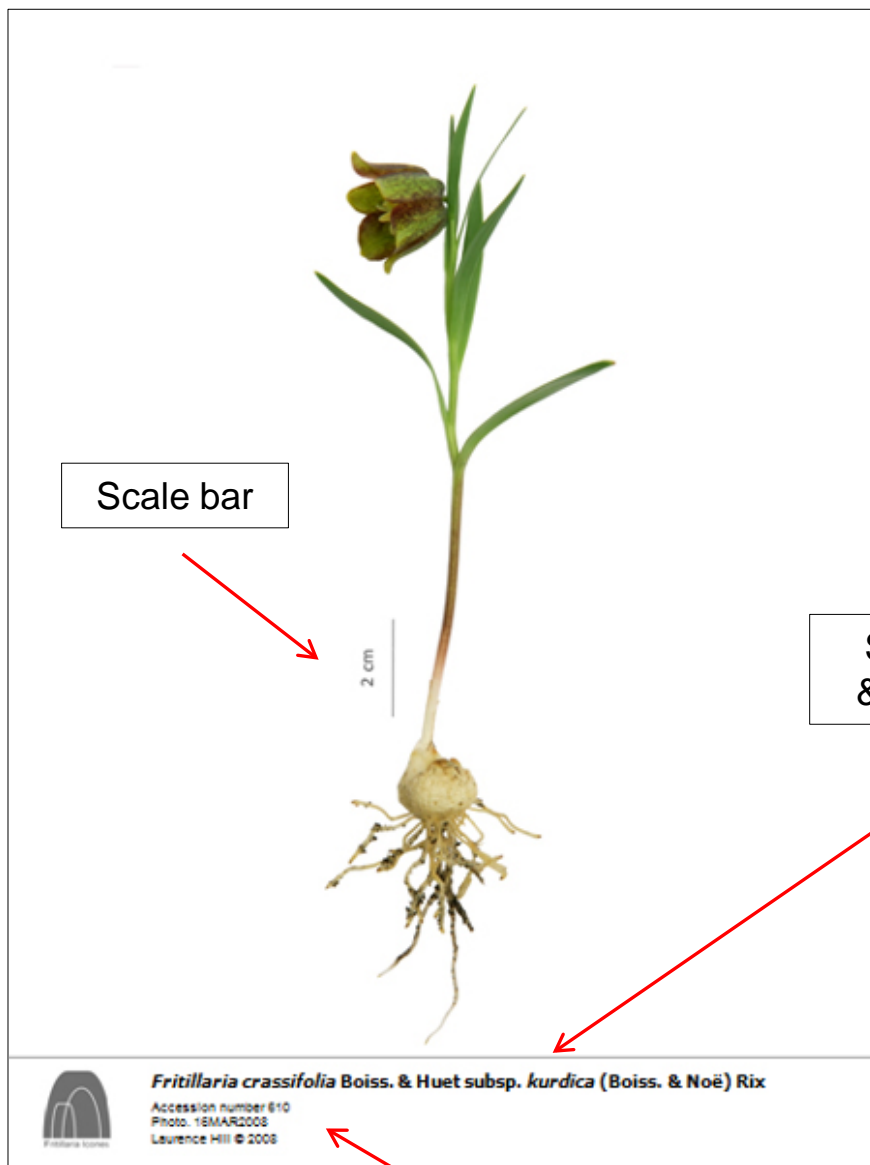
Attribution to the content of the website should take the form of a URL to either the *Fritillaria Icones* home page or the specific page or link. You may not use the website content for commercial purposes. Waiver of any of these conditions is dependent on permission being granted by the copyright holder and if relevant the original donor of material.



Fritillaria Icones

User Guide: URL <http://www.fritillariaicones.com/info/Guide.pdf>
Laurence Hill © 2011

PORTRAIT – the whole plant including roots shown at dehiscence of the anthers

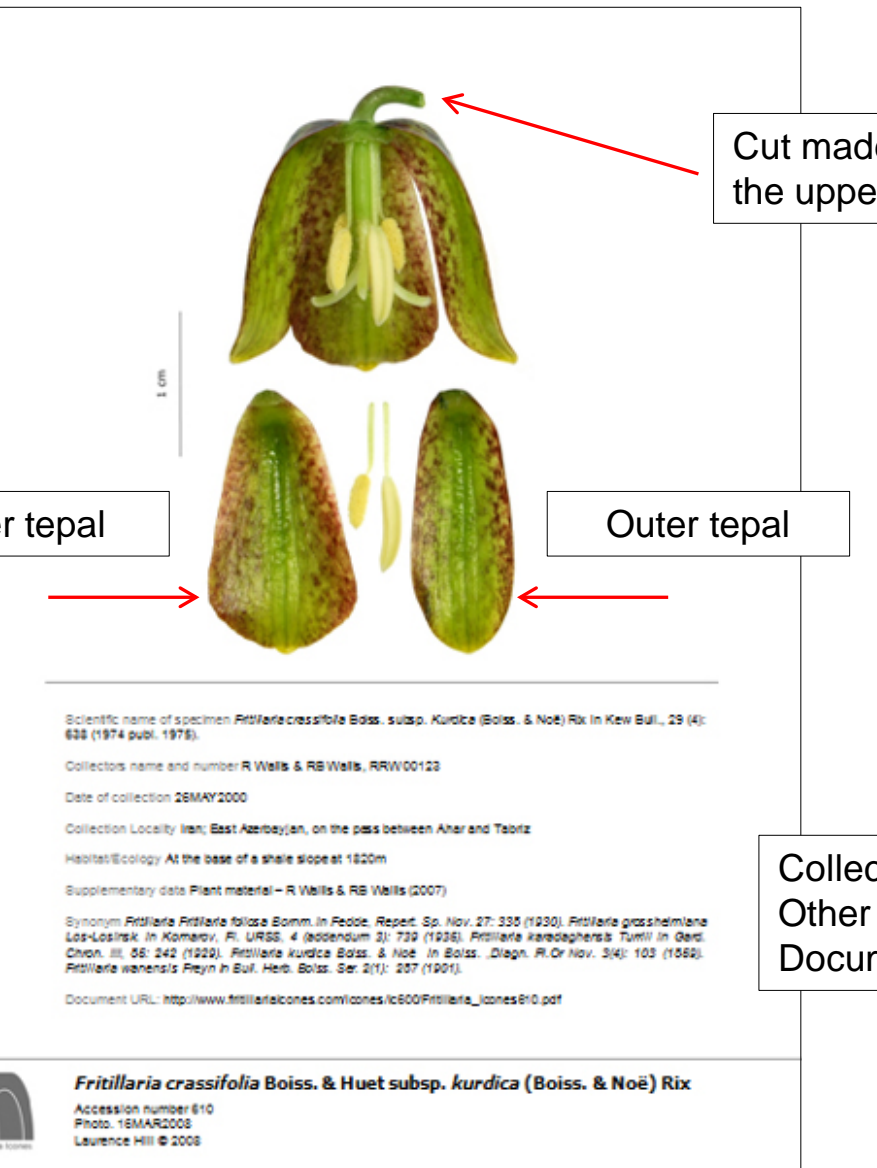


Scale bar

Specific epithet
& author citation

Accession number
Day/Month/Year of photograph
Copyright

FLOWER DISSECTION – showing flower with complete pedicel, inner and outer tepal and anthers both before and after dehiscence of the anthers



Cut made directly above the uppermost leaf(s)

Inner tepal

Outer tepal

1 cm

Scientific name of specimen *Fritillaria crassifolia* Boiss. subsp. *kurdica* (Boiss. & Noë) Rix in Kew Bull., 29 (4): 628 (1974 publ. 1975).

Collectors name and number R Walls & RB Walls, RRW00123

Date of collection 26MAY2000

Collection Locality Iran; East Azerbaijan, on the pass between Ahar and Tabriz


Habitat/Ecology At the base of a shale slope at 1820m

Supplementary data Plant material – R Walls & RB Walls (2007)

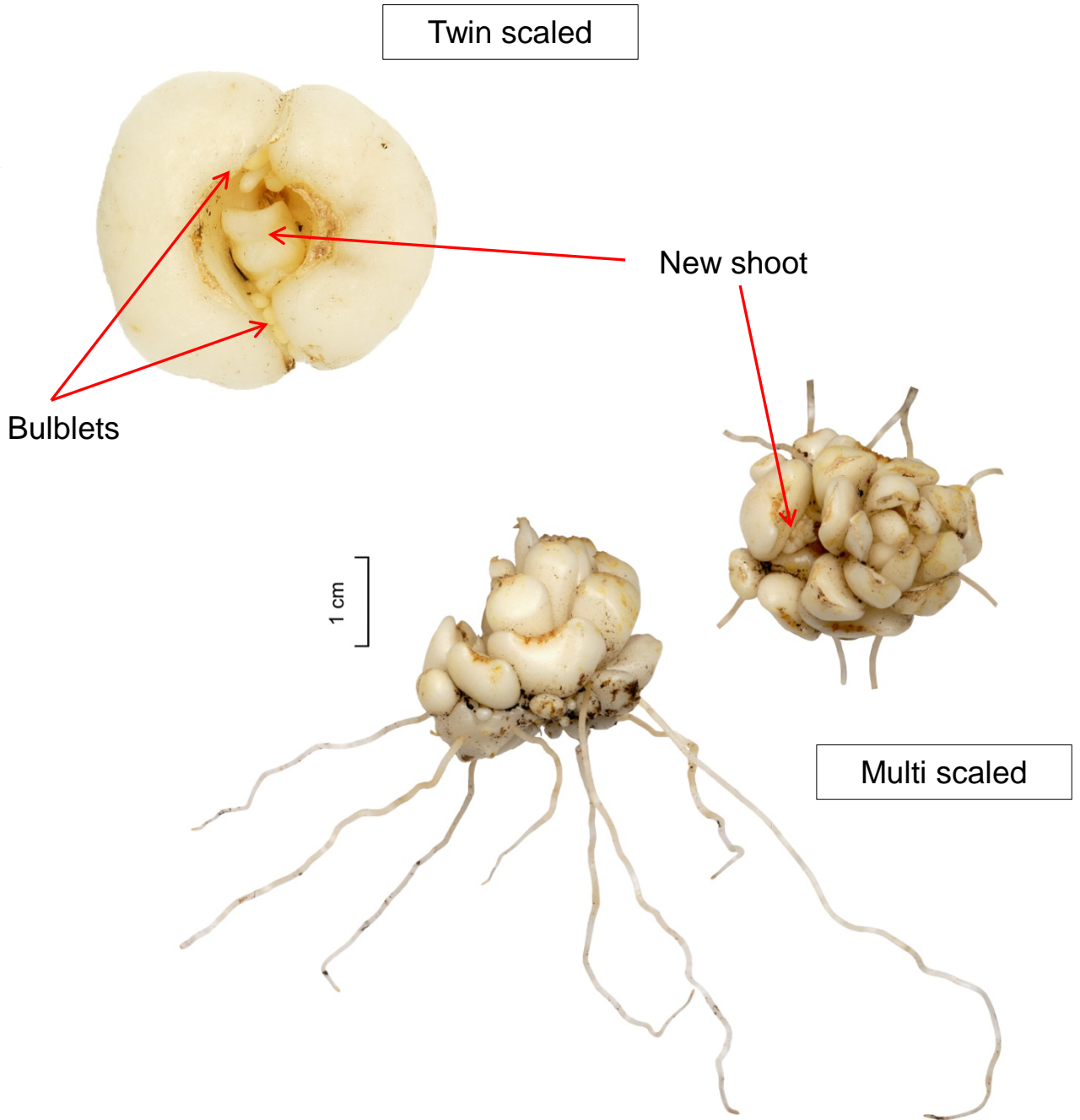
Synonym *Fritillaria* *Fritillaria foliosa* Bomm. in Fedde. Reperit. Sp. Nov. 27: 335 (1930). *Fritillaria grossheimiana* Los-Lositsk. in Komarov, Fl. URSS, 4 (addendum 3): 739 (1936). *Fritillaria karedeghensis* Turm. in Gard. Chron., III, 56: 242 (1922). *Fritillaria kurdica* Boiss. & Noë in Boiss. Diagn. Fl. Or. Nov. 3(4): 103 (1862). *Fritillaria wahanensis* Freyn in Bull. Herb. Boiss. Ser. 2(1): 257 (1901).

Document URL: http://www.fritillariaicones.com/icones/ic600Fritillaria_icons610.pdf

Collection details
Other data
Document URL

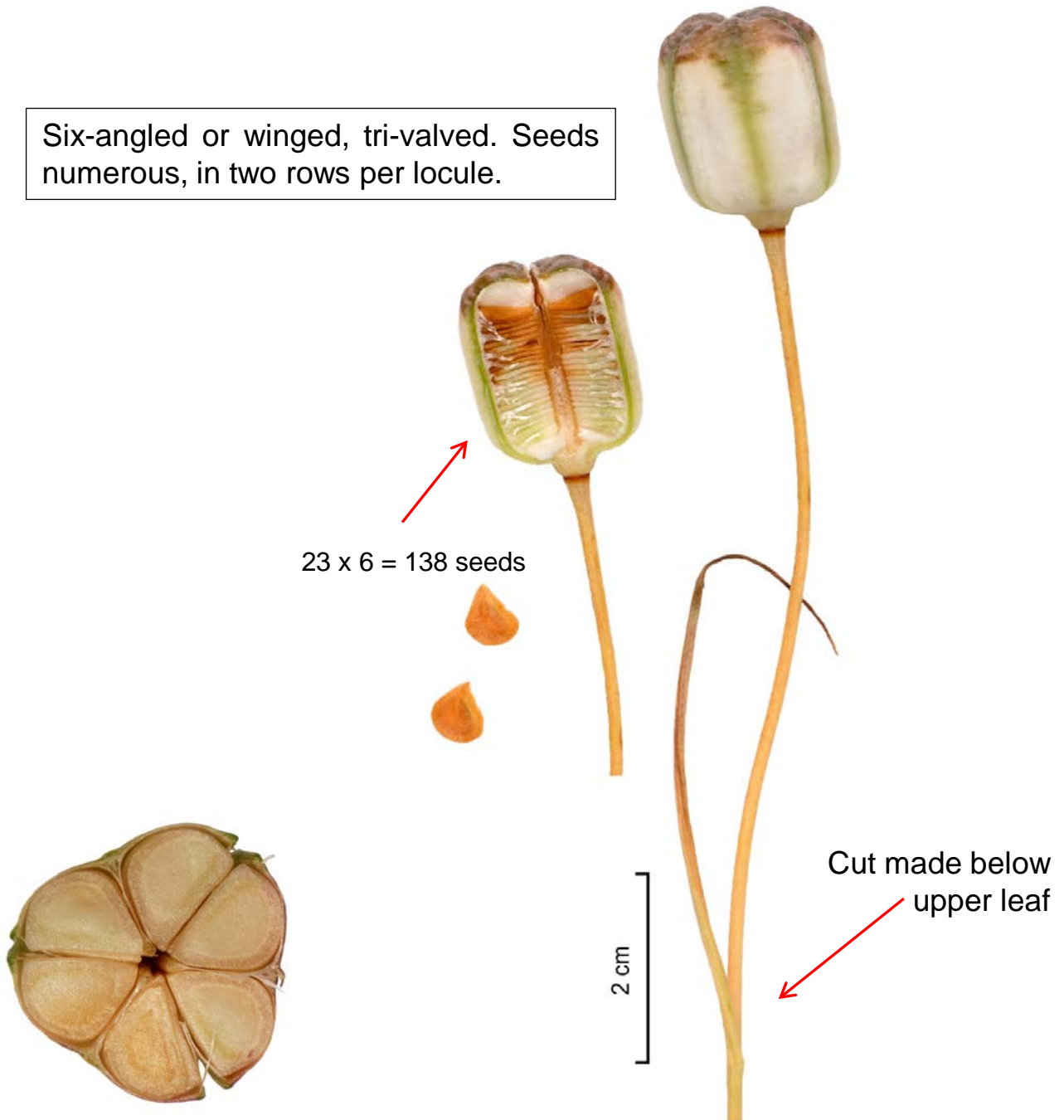
 ***Fritillaria crassifolia* Boiss. & Huet subsp. *kurdica* (Boiss. & Noë) Rix**
Accession number 610
Photo. 16MAR2008
Laurence Hill © 2008

BULB – just after the start of root growth



CAPSULE – Shown late in its developmental cycle with part dissection to show the number of seeds per valve

Six-angled or winged, tri-valved. Seeds numerous, in two rows per locule.



SEED – just after the emergence of the radical

Germination is the point at which the radical emerges

